

# R410A Non Inverter Wall Mounted Series



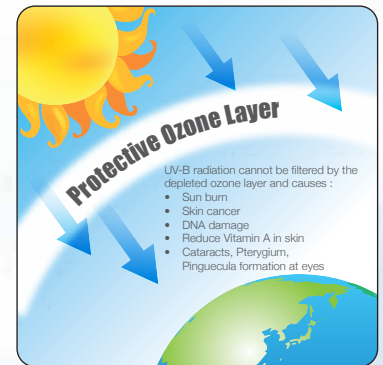
R410A

## Wall Mounted Series

TYPE OF REFRIGERANT <b>R410A</b>	Indoor Model	Outdoor Model	Capacity Range
	 <p><b>Premium Series</b> FTN10/15/20/25QSV1I FTN10/15/20/25QSV1J</p>  <p><b>Standard Series</b> FTN10/15/20/25PV1L FTN10/15/20/25PV1M</p>  <p>FTN30/35PSV1L FTN30/35PSV1M</p>	 <p>RN10/15FV1</p>  <p>RN20/25CV1</p>  <p>RN25CHV1 RN30CV1</p>  <p>RN35DV1</p>	1.0 - 3.5 hp

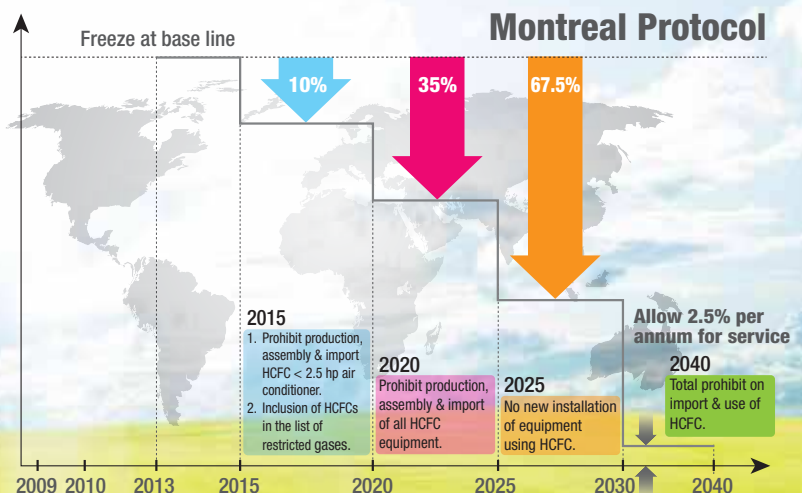
### Classic Refrigerants Deplete Ozone

- R22 refrigerant is a hydrochlorofluorocarbon (HCFC) compound.
- R22 is an ozone depletion substance which contain chlorine.
- Chlorine deplete the protective ozone layer by the processes below:



### Regulations

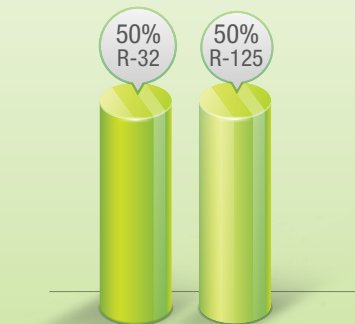
- According to Montreal Protocol, R22 will be gradually phased-out.
- In Malaysia, Department of Environment (DOE) has implemented HCFC Phase Out Management Plan (HPMP).
- For R22 air-conditioners, 25,000 btu/hr and below, will be phased out by year 2015.



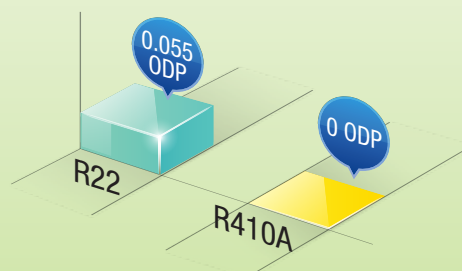
# Refrigerant Alternative

## R410A: The Ozone-Friendly Refrigerant

- R410A as an alternative to R22 refrigerant because it is an ozone-friendly refrigerant.
- R410A refrigerant has no chlorine content which do not contribute to the depletion of the ozone layer.
- R410A is of zero ozone depletion potential (ODP=0).
- The lower the ODP value, the better environmental performance.



The Composition of R410A  
\* R-32: CH<sub>2</sub>F<sub>2</sub>; R-125: C<sub>2</sub>HF<sub>5</sub>



The Comparison of Ozone Depletion Potential (ODP)

## Outlook Design

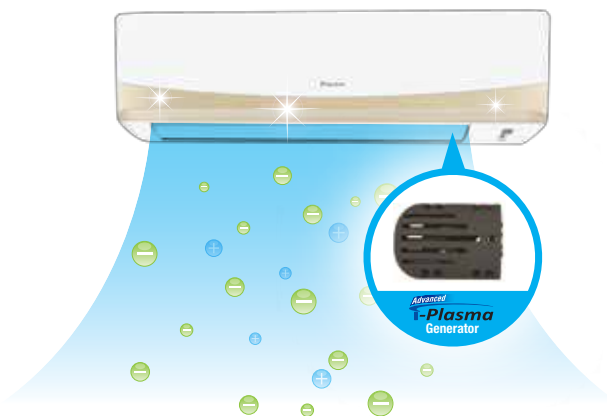
- **FTN-QS Series** : Designed with elegant and modern-stylish exterior casing to enhance your interior decoration.
- **FTN-P Series** : The beautiful and clean design brings out a feeling of elegance and simplicity in your interior decoration.
- **FTN-PS Series** : Ideal blend of style and function. Regular cleaning is easier by just wiping the flat front panel. This ensures the air-conditioner looks brand new at all time.

## Advanced I-Plasma \* Only for FTN-QS Series

Purify The Air

### Advanced I-Plasma

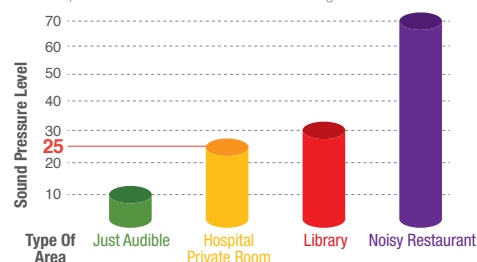
- High effectively to deactivate bacteria by damaging those microbial DNA and their surface structures by this advanced plasma technology.
- It emits massive positive and negative ions, and sterilize surrounding air with more effectively. Daikin FTN-QS Series emits 100 times more ions than ionizer technology in the current market by using our advance i-plasma technology.
- Daikin FTN-QS Series ensures a clean and healthy environment lifestyle for you and your family.



## Quiet Operation

Users are given more choices of up to five selectable fan speeds. By selecting the Quiet mode users can enjoy the refreshing cool air at the sound level as low as 25dBA.

\* Sound pressure levels are measured according to JIS C 9612 standard.



## Compact and Easy-To-Use Controller

- Prominent temperature display.
- Real-time clock display.
- Easily accessible buttons



DGS01 Wireless Controller

## Slim Wired Controller (Optional)

The unit also offers an optional wired controller upon your special requirement.

- Dedicated buttons for Quiet and Turbo functions
- Key lock function
- Real-time timer (7 days option, 2 events daily)



DSLM8 Wired Controller

## High Efficiency Hydrophilic Fin

The hydrophilic coated fin ensures the condensate water moves easily to the drain pan thus enhancing the cleanliness and lifespan of the cooling coil.

# Product Features

# Features

## Self-Diagnosis System

The advanced Daikin R410A Non Inverter Wall Mounted Series is an intelligent unit equipped with a self-diagnosis system that can detect and indicate malfunctions with LED lights blinking.

## Turbo Mode

- This function is available in COOL mode.
- Upon activation, the unit will run to full power with the indoor fan running at high speed for 20 minutes. This will provide fast cooling during operation.

## Smooth Air Distribution

- SCR motor (Silicon Control Rectifier), voltage controlled speed provides better and smooth air flow swing.
- High efficiency X-flow fan provides smooth air flow and quiet operation.



## Far Air Throw \* For 3-3.5hp only

- New powerful motor combine with advanced control technology to delivery air further in order to provide a far air throw which can reach further place.
- During operation, the air throw can reach up to 14M.



## Auto Random Restart

- Once power resumes after a blackout, the unit will restart automatically at its last setting condition.
- This eliminate the need to restart manually after each power failure.

## 5 Years Warranty

The outstanding Daikin R410A Non Inverter Wall Mounted Series come with 5 years warranty on the 1.0 - 2.75hp compressor.



# Specifications



FTN10/15/20/25QSV1L  
FTN10/15/20/25QSV1J



FTN10/15/20/25PV1L  
FTN10/15/20/25PV1M



FTN30/35PSV1L  
FTN30/35PSV1M

R410A

MODEL	INDOOR UNIT	WIRELESS	FTN10PV1L	FTN15PV1L	FTN20PV1L	FTN25PV1L	FTN25PV1L	FTN30PSV1L	FTN35PSV1L	
			FTN10QSV1I	FTN15QSV1I	FTN20QSV1I	FTN25QSV1I	FTN25QSV1I	FTN30PSV1L	FTN35PSV1L	
			FTN10PV1M	FTN15PV1M	FTN20PV1M	FTN25PV1M	FTN25PV1M	FTN30PSV1M	FTN35PSV1M	
OUTDOOR UNIT		FTN10QSV1J	FTN15QSV1J	FTN20QSV1J	FTN25QSV1J	FTN25QSV1J	FTN30PSV1M	FTN35PSV1M		
		RN10FV1	RN15FV1	RN20CV1	RN25CV1	RN25CHV1	RN30CV1	RN35DV1		
TOTAL COOLING CAPACITY		Btu/hr	9,500	12,000	18,000	22,000	24,000	30,000	33,000	
		W	2,784	3,517	5,275	6,448	7,030	8,792	9,671	
INPUT POWER		W	870	1,105	1,835	2,060	2,140	2,900	3,660	
RUNNING CURRENT, 1□ [3□]		A	3.86	4.94	8.10	9.14	9.32	13.50	16.20	
EER		Btu/hr/WWW	10.92 / 3.20	10.86 / 3.18	9.81 / 2.87	10.68 / 3.13	11.22 / 3.29	10.34 / 3.03	9.02 / 2.64	
POWER SOURCE		V/Ph/Hz	220-240 / 1 / 50							
REFRIGERANT TYPE/CONTROL			R-410A / OUTDOOR CAP. TUBE							
AIR FLOW		CFM	342	355	531	614	614	931	931	
SOUND PRESSURE LEVEL	HIGH	dBA	38	40	42	46	46	51	51	
	LOW		27	29	36	40	40	42	42	
	SUPER LOW		25	28	35	37	37	39	39	
UNIT DIMENSION (HXWXD)	INDOOR UNIT	P-SERIES	288 x 800 x 212			310 x 1,065 x 228			-	
		QS-SERIES PS-SERIES	288 x 859 x 209			310 x 1,124 x 237			-	
	OUTDOOR UNIT		-			-			310 x 1,289 x 240	
			550 x 658 x 273		654 x 855 x 328		756 x 855 x 328		852 x 1,030 x 400	
UNIT WEIGHT	INDOOR UNIT	kg	9		14			16		
	OUTDOOR UNIT		28	29	43	47	57	71		
COPPER PIPE SIZE	LIQUID	mm/in	6.35 / 1/4						9.52 / 3/8	
	GAS	mm/in	9.52 / 3/8		12.7 / 1/2		15.88 / 5/8			

1) DUE TO OUR POLICY OF INNOVATION, ALL SPECIFICATIONS ARE SUBJECTED TO CHANGE BY THE MANUFACTURER WITHOUT PRIOR NOTICE.  
 2) ALL UNITS ARE BEING TESTED AND COMPLY TO ISO 5151.  
 3) NOMINAL COOLING CAPACITY ARE BASED ON THE CONDITIONS BELOW :  
 COOLING - 27°C DB / 19°C WB INDOOR AND 35°C DB / 24°C WB OUTDOOR  
 4) SOUND PRESSURE LEVELS ARE MEASURED IN ANECHOIC CHAMBER. DURING ACTUAL OPERATION, SOUND PRESSURE LEVEL WILL HIGHER AS A RESULT OF ROOM SPECIFICATION CONDITION.

www.daikin.com.my

## DAIKIN MALAYSIA SALES & SERVICE SDN. BHD.

(109719-M)

Head Office: Tel: 03-7953 8388 Fax: 03-7956 4371

Email: sales\_enquiry@daikin.com.my, customer\_service@daikin.com.my

- Branches:
- Kedah Tel: 04-730 5670
  - Penang Tel: 04-331 1670
  - Perak Tel: 05-548 2307
  - Negeri Sembilan Tel: 06-768 8969
  - Melaka Tel: 06-288 1133
  - Johor Tel: 07-557 7788
  - Pahang Tel: 09-567 6778
  - Kelantan Tel: 09-747 4578
  - Sabah Tel: 088-722 194
  - Sarawak Tel: 082-333 299

Authorized dealer: